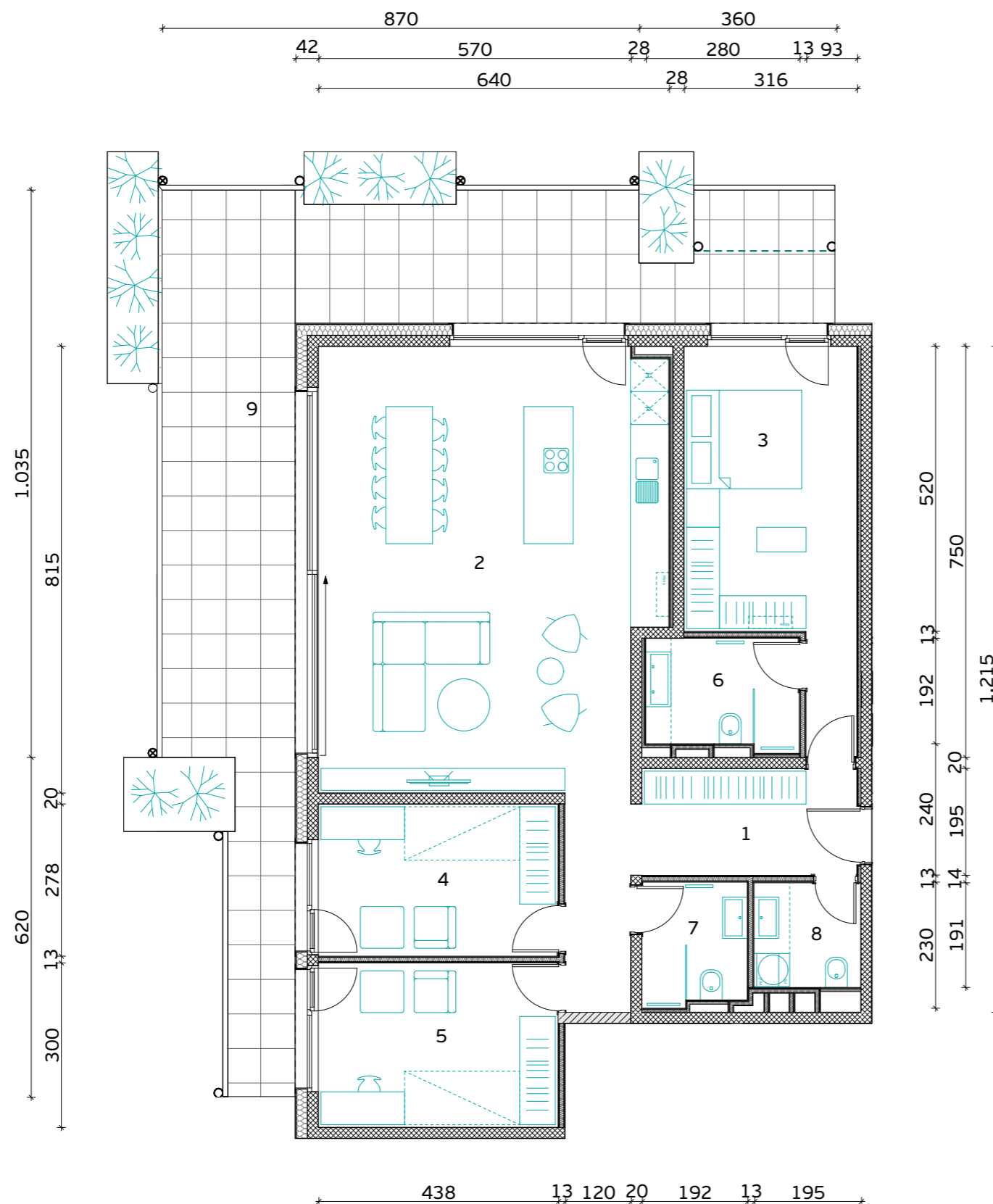
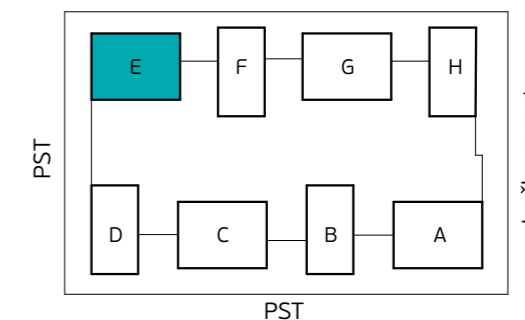
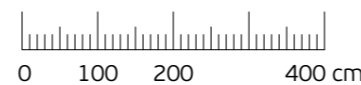


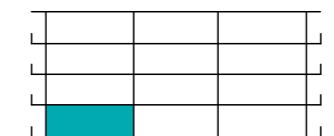
Orientacija stanovanja



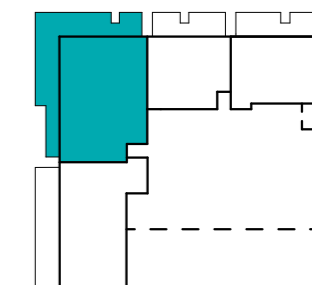
MERILO



Skica naselja



Položaj stanovanja v stavbi - prerez



Položaj stanovanja v nadstropju - tloris

STAVBA "E" - PRITLIČJE

## STANOVANJE E-0-2

|                    |                     |
|--------------------|---------------------|
| 1. PREDPROSTOR     | 7.9 m <sup>2</sup>  |
| 2. BIVALNI PROSTOR | 54.6 m <sup>2</sup> |
| 3. SPLANICA        | 18.5 m <sup>2</sup> |
| 4. KABINET 1       | 12.2 m <sup>2</sup> |
| 5. KABINET 2       | 13.1 m <sup>2</sup> |
| 6. KOPALNICA 1     | 5.6 m <sup>2</sup>  |
| 7. KOPALNICA 2     | 4.3 m <sup>2</sup>  |
| 8. WC IN UTILITY   | 3.7 m <sup>2</sup>  |

**STANOVANJSKA POVRŠINA 119.9 m<sup>2</sup>**

|                       |                     |
|-----------------------|---------------------|
| 9. TERASA (NADKRITA)  | 50.7 m <sup>2</sup> |
| 9. TERASA             | 3.1 m <sup>2</sup>  |
| 10. SHRAMBA ZA KOLESA | 8.6 m <sup>2</sup>  |
| 11. SHRAMBA           | 5.5 m <sup>2</sup>  |

**SKUPNA POVRŠINA 187.8 m<sup>2</sup>**

PARKIRNO MESTO 2 PM

VISEČI VRTOVI 11.7 m<sup>2</sup>



**PRVAHIŠA**

Družba za razvoj nepremičninskih projektov

INVESTITOR: **JURČKOVO NASELJE d.o.o.**

PRODAJALEC: **PRVA HIŠA d.o.o.**

Bravničarjeva ulica 13, 1000 Ljubljana

+386 (0)1 292 65 00

info@prvahisa.si

www.jurckovo-naselje.si